

www.utu.fi/4ESA2008 - esa2008-info@utu.fi

4th ESA European Symposium on Aerobiology

12-16 August 2008

Turku, Finland

4th ESA 2008

Second announcement and call for abstracts

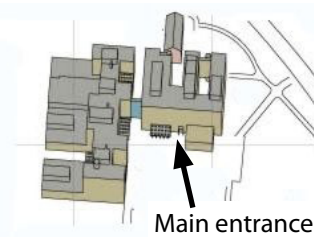


Contents

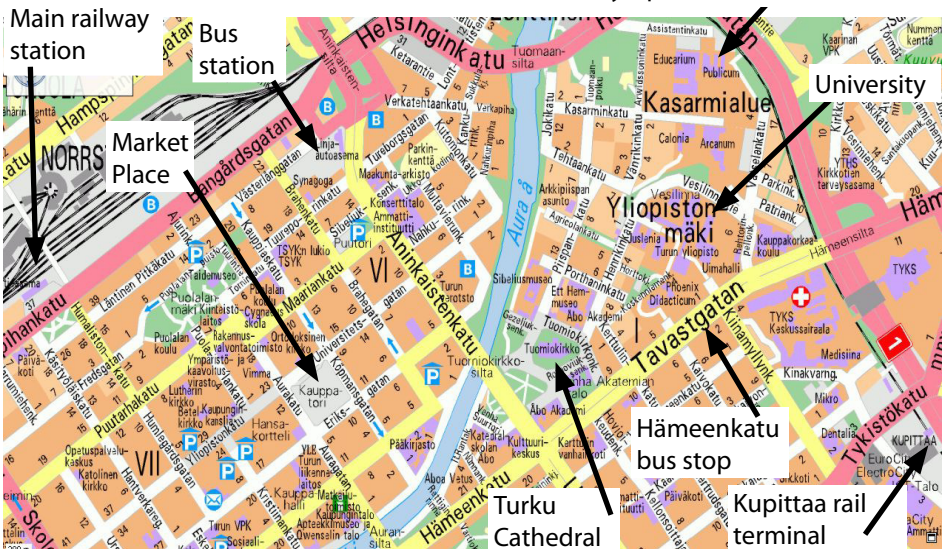
Symposium venue	2	Social programme	7
Welcome	3	Turku and Southwestern Finland	7
Committees	3	What to see in Turku	7
Programme plan at a glance	4	Exploring Finland and neighbouring states	8
Abstract preparation and submission	5	Travelling to Turku	9
Presentations	5	Accommodation	10
Travel grants	5	Additional information	11
Registration and payment	6	Contact information	12
Cancellations and refunds	6	Sponsors	12

Symposium Venue

The new campus area of the University of Turku, in the Educarium and Publicum buildings. Street address is Assistentinkatu 5-7. See the interactive map at www.opaskartta.turku.fi



Symposium venue Publicum



Dear Colleagues,

it is a great pleasure to invite you to Turku and to the 4th European Symposium on Aerobiology 12-16 August 2008.

The symbol of our meeting, the wind vane, reminds us of the three previous venues in the South (Santiago de Compostela, Spain 1996), East (Vienna, Austria 2000) and West (Worcester, UK 2003).

The ESA symposium is designed for all students, professionals and experts working with basic aerobiology, palynology, forensic research, allergology, GM plants, phenology, indoor air quality, meteorology and modelling, long distance transport, satellite imaging and related topics. The attendance should be particularly useful to those who want to broaden their understanding of the rapidly developing research applications in aerobiology.

The scientific programme consists of plenary lectures and free oral and poster presentations. We welcome abstracts on all topics regarding aerobiology, including methodology and applications.

A highlight during the Symposium will be the first general meeting of the European Aerobiology Society EAS, which will be held on our Cruise Day Thursday 14 August 2008, on a passenger liner cruising between Turku and Mariehamn in the Åland Islands. This is particularly noteworthy, because from now on we will have our own European organisation to help in arranging future European meetings, to collaborate with interest groups. Your suggestions for topics for the Cruise Day workshops and round table discussions are most welcome!

The symposium is more than a scientific forum and a networking opportunity - it is the meeting place for friends from different specialities and disciplines.

I am looking forward to welcoming you in Turku!

Auli Rantio-Lehtimäki

Chairperson of the Local organising committee

The 4th ESA Scientific Committee

Chairperson: Auli Rantio-Lehtimäki (FI)

Members: Rui Brandao (PT)
Bernard Clot (CH)
Jean Emberlin (UK)
Carmen Galán
Soldevilla (E)
Anne Hyvärinen (FI)
Siegfried Jäger (A)

Anna Kuparinen (FI)
Mikhail Sofiev (FI)
Frits Spijksma (NL)
Alicja Stach (PL)
Michel Thibaudon (F)
Erkka Valovirta (FI)

Local Organising Committee

Chairperson: Auli Rantio-Lehtimäki (FI)

Members: Anna-Mari Pessi
Hanna Ranta
Satu Saaranen

Symposium coordinator: Mervi Oikonen

Programme Plan at a Glance

Preliminary Scientific Programme		Social Programme	
Tuesday 12.8.2008	<p>Session I: Pollen and Spores in General <i>Sponsored by Lanzoni s.r.l.</i> Siegfried Jäger (<i>Vienna, Austria</i>): Effects of climate change to pollen and spores</p> <p>Session III: Forensic Aerobiology Jean Emberlin (<i>Worcester, UK</i>): Forensic palynology; using pollen in the fight against crime</p> <p>Poster Session I</p>	<p>Session II: Gene Flow Anna Kuparinen (<i>Helsinki, Finland</i>): Ecological and evolutionary consequences of gene flow Irma Saloniemi (<i>Turku, Finland</i>): Environmental and evolutionary implications of genetically modified organisms</p> <p>Session IV: Allergology <i>Sponsored by ALK Abellö Finland A/S</i> Erkka Valovirta (<i>Turku, Finland</i>): The Finnish Allergy Programme - from avoidance to tolerance induction</p>	
Wednesday 13.8.2008		Symposium Gala Dinner	
Thursday 14.8.2008	<p>Cruise Day: General Meeting of the European Aerobiology Society. Round table discussions. Official meetings and workshops.</p>	Buffet Dinner	
Friday 15.8.2008	<p>Session V: Phenology Arnold van Vliet (<i>Wageningen, the Netherlands</i>): Involving phenological networks and their information systems to monitor, predict and communicate start of flowering Carmen Galán Soldevilla (<i>Córdoba, Spain</i>): New phenological methods and the possible effect of climate change</p>	<p>Session VI: Indoor Air Hazards: Allergens and Mould Toxins Anne Hyvärinen (<i>Kuopio, Finland</i>): Exposure assessment of environmental microbes Frits Spijksma (<i>Leiden, the Netherlands</i>): House-dust mites and the indoor micro-climate</p>	Optional excursion to Naantali and Moomin-world
Saturday 16.8.2008	<p>Poster Session II</p> <p>Session VIII: LDT, Meteorology, Satellite Imaging, Modelling Jaakko Kukkonen (<i>Helsinki, Finland</i>): Evaluation and forecasting of the atmospheric concentrations of anthropogenic pollutants and allergenic pollen</p>	<p>Session VII: Other topics I</p> <p>Session IX: Other topics II</p>	

Abstract Preparation and Submission

We welcome abstracts for oral and poster presentations. Abstracts can be submitted electronically via the online form at www.utu.fi/4ESA2008 OR as email attachment to esa2008-info@utu.fi.

The deadline for submission is 15 March 2008. The organizers reserve the right to ignore abstracts that do not arrive on time. Notification of acceptance or rejection will be dispatched from 5th May 2008.

All accepted abstracts will be printed in the Abstract Book, without language revision. A selection of papers can be reviewed for publication in *Aerobiologia International Journal of Aerobiology*. Number of abstracts per author is not limited.

Abstract guidelines

- Abstracts must be submitted in English.
- The length of the abstract body should not exceed 500 words.
- Provide your email address and a corresponding address.
- List all authors, including the corresponding author, in this order: Lastname, Firstname (Institution);

- Lastname, Firstname (Institution) etc.
- Please note that we may have to simplify special characters.

Presentations

The oral presentation time will be **20 minutes**, including discussion. Powerpoint or compatible formats are encouraged. Only computer projectors will be automatically provided in all rooms. Overhead transparency projectors and single slide presentation facilities will be made available if requested in advance.

Scheduling: as soon as the program is set (approximately June 2008), authors can see their presentation times on the symposium website.

Poster size and presentation: 88 cm (maximum width) by 120 cm (recommended height). Posters will be hanged on 88*120 cm pinboards; pins will be provided. Posters are assigned presentation time as a part of a poster session. Poster session times are published on the Symposium website from June 2008.

Deadline for abstract submission: 15 March 2008

Submit online at www.utu.fi/4ESA2008

Travel Grants

A limited number of travel grants between 100-500 euros can be applied for by students and young researchers (under the age of 35 at the time of the symposium). Applications stating the applicant's name, email and mail addresses and the abstract must be

sent in to the symposium organisers by the 30th April 2008. Applications are reviewed by the organising committee. Notification of acceptance or rejection will be sent via email to the applicants by the 12th May 2008.

Registration and Payment

**Register online at
www.utu.fi/4ESA2008
by 31 May2008**

Higher registration fee
from 1 June 2008

Symposium fees (in EUR):

Full delegate	490 €
Late registration (1.6.)	530 €
Student	420 €
Day delegate	100 €
Half day delegate	60 €
Accompanying person	220 €
Naantali and Moominworld	90 €

The registration fee includes:

For full delegates and students:

The scientific programme
Abstract Book and symposium pack
Get Together Party and Cathedral tour
Symposium Gala Dinner
Scientific programme, cruise and buffet
dinner on Cruise Day
Daily lunches and coffees

One Day and Half day delegates:

The day/half day scientific programme
Abstract Book and symposium pack
Lunch and coffee

For accompanying persons:

Get Together Party and Cathedral tour
Symposium Gala Dinner
Cruise and buffet dinner
Daily lunches and coffees

Payment methods:

1) Credit card payments with Visa or MasterCard. Print the Credit Card Authorization form (downloadable from our website), fill it in, sign and fax to +358 2 333 5565.

2) Bank transfer in EUR to:

Nordea Bank Finland Plc,
Aleksanterinkatu 36, Helsinki,
FI-00020 NORDEA, Finland

SWIFT/BIC code: NDEAFIHH

IBAN no: FI53 1660 3000 1094 81

Account no: 166030-109481

Message: Project 44423 / your name

**Always remember to write the
name(s) of delegate(s) when
making payments!**

Confirmation will be sent upon receipt of payment.

Cancellations and refunds

Notification of cancellation must be sent in writing to the Symposium coordinator: Mervi Oikonen, ESA2008, c/o Aerobiology Unit, FI-20014 University of Turku, Finland.

Cancellation of registrations will be accepted until 31 May 2008, up to which the total amount will be refunded except 30 EUR for cancellation fee. We regret that no refunds can be done for cancellations made after 31 May 2008.

Social Programme

Get Together -party and Cathedral tour 12.8.08 we take a leisurely tour on foot to the impressive Turku Cathedral, a 900-year-old place of worship and the major tourist attraction in Turku.

Symposium Gala Dinner 13.8.2008: the Symposium Dinner is held in the center of Turku at the historical Fire Brigade House, built in 1892 (address: Eskelinkatu 5).

Cruise Day 14.8.2008: the passenger liners take us from Turku to Mariehamn in the Åland islands. Enjoy the peaceful natural views of the archipelago, tax-free shopping opportunities, quality restaurants and a lively leisure cruise programme.

Optional excursion to Naantali and Moominworld: Moominworld is a theme park based on children's books written by Tove Jansson. The park is on a green island at the idyllic small town of Naantali. After exploring the Moomin family's blue house from Moomintroll's garret room to Moominmamma's jam cellar, we visit the Naantali historical church and enjoy a buffet dinner including drinks at the Kaivohuone restaurant. The price of this optional excursion includes bus transfers, entrance fees and dinner. Departure from the Symposium venue is on Friday afternoon 15.8.08.



What to see in Turku

Turku is a busy market town of 175 000 inhabitants on the Southwestern coast of Finland, about 160 km west from Helsinki. Turku has a vivid history as the former capital. Today Turku is a centre of new technology and university education.

For symposium guests, the town offers spacious hotel rooms, excellent transport facilities and original Finnish gastronomy. Local delicacies include Baltic herring and whitefish.

One speciality of Turku are the beer boats: the floating pubs in old ships on the river Aura.

During the symposium, the Turku Music Festival offers chamber music, recitals and early music played on authentic instruments (www.tmj.fi).

The Turku City Tourism authority arranges excursions: below are some examples but note that changes are possible. For more information, tour prices, schedules and reservations, see www.turkutouring.fi.

City tour of Turku: Turku Cathedral, The national shrine of Finland from A.D. 1300 is the symbol of the city and the major tourist attraction in Turku. Luostarinmäki Handicrafts Museum, a maze of old, small wooden dwellings of the working classes from the 18th century. Local artisans work with the antique working utensils in the 30 craft shops. Turku Castle was built in the 1280s, but the castle's heyday was in the Renaissance, during the rule of Duke Johan and Katarina Jagellonica.

Field Trip for Beer Lovers: visit the most famous pubs in town: Brewery Restaurant

Koulu (School), in a former all-girls school and Old Bank in former bank offices, The New Apothecary in an ex-pharmacy and Puutorin Vessa, the only public toilet in the world converted into a functionalism-style restaurant.

The Sea and River Tour of Turku:

Forum Marinum's museum ships anchored in the Aurajoki-River: rigate Suomen Joutsen, barque Sigyn and minelayer Keihässalmi.

A Trip to Seili: in the past Seili was known for housing a leper colony and a mental hospital but today it has the archipelago research station of the University of Turku. Visit the idyllic wooden church. Coffee break on the return leg of the journey.

Garden Excursion of Turku and Naantali:

Ruissalo Island has the University of Turku Botanical Gardens. The Peltola allotment is a green oasis in the city, lovingly tended to by its residents. After coffee the tour circles the Katariina and Uttamo neighbourhoods and stops at the Kauppila Garden Centre. After a tasty lunch a visit to the gardens of Kultaranta, the summer residence of the President of Finland.

A Trip to Ruissalo: a video presentation at Tammenterho Visitor Centre shows the four seasons of Ruissalo, before a visit to the Turku University Botanical Gardens.

Garden Tour of Piikkiö: Pukkila Manor and herb garden from the 18th century; the Yltöinen Arboretum, founded in the 1930's and known for its rhododendrons; and Munste, a park-in-a-yard. At Munste and the arboretum trees are displayed as illustrative model plantings. A traditional



farm-house luncheon is served at the Kavalto farm, and afternoon coffee is enjoyed at the Tuorla Agricultural Academy. The Tuorla Hostel has a small shop selling products of nearby farms, specialities of small producers and handicrafts.

Exploring Finland and neighbouring states:

In a privileged position on the shores of the Baltic Sea, Turku offers excellent opportunities to explore the world famous archipelago of exceptional natural beauty and unique tranquillity (read more at www.saaristo.org). Finland is a peaceful country, perfect for relaxing family holidays. For experiencing the forests, lakes, swamps and the countryside, try hiking in the national parks or hire a cottage by a lake or on the shores of the Baltic Sea. On a day trip from Turku with bus or train you can admire the classical architecture and varied museums of Finland's capital Helsinki, or experience Tampere, the vibrant industrial and university city beautifully located on lakeside.

From Helsinki several daily ferry links take you quickly to Tallinn to see the Baltic countries. Like Finland, Estonia, Latvia and Lithuania are all EU countries and part of the Schengen area.

For visiting St Petersburg in Russia, travel agencies arrange visas and safe and comfortable 3-5 days trips by train or coach (www.turunnevatours.fi from Turku).

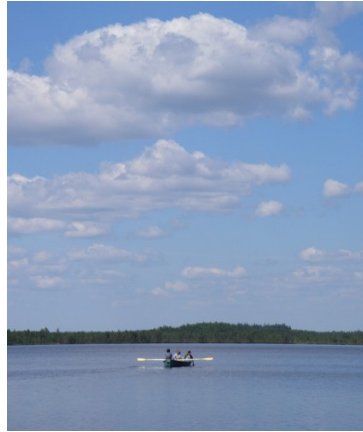
In a weekend, you can visit Lapland and see Santa Claus and his reindeer. Several daily flights take you comfortably from Helsinki to Rovaniemi, see www.finnair.fi. Driving from Turku by car to Rovaniemi takes approximately 14-16 hours.

For your own explorations and pre- or post-symposium touring, look at some of the travel agencies in Finland:

Finland Travel Bureau: www.ftb.net

Lapland Vip Tour: www.laplandviptour.fi

Lapin Lomamatkat: www.lapinlomamatkat.com



Travelling to Turku

Turku has an international airport 8 km from city centre, with direct flights from Helsinki, Stockholm, Copenhagen and Gdansk and connecting flights via Helsinki. Turku city bus number 1 connects the airport to the Market Place.

From Helsinki airport there is a shuttle bus (2,5 hours) to Turku, departures every hour. Rental cars are available from the airports.

Turku has bus and rail connections from Helsinki and Tampere city centre. From Helsinki you can also use the small terminal at Kupittaa, close to the University, or the main railway station at the city centre.

For all those fond of cruising aboard a passenger liner, we can recommend an

overnight or a whole day cruise from Stockholm to Turku.

Transportation in Turku

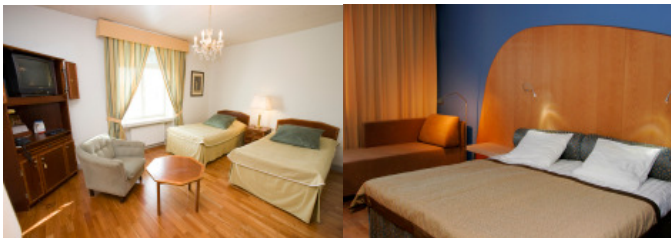
The symposium hotels are within walking distance (1,5 km) from the symposium venue.

All city buses in Turku stop by the Market Place, where you can switch between buses. The single fare allows two hours' unlimited travelling. A 24-hour travel ticket can be purchased also by a text message. Many buses (4,28,40,50,51,53,54,55) take you from Market Place to Hämeenkatu bus stop close to the Symposium venue.

Taxi number is 02 10041 in Turku, +358 1000 700 in Helsinki area, or dial 118 for national telephone directory service.

Timetables and route planning:

Airports: www.finavia.fi - Long-distance buses: www.expressbus.fi
Railways: www.vr.fi - Flight operators: www.finnair.fi, www.sas.fi, www.wizz.fi,
www.wingo.fi - Ferry companies: www.vikingline.fi, www.tallinksilja.fi
City buses in Turku: bussit.turku.fi and www.turku.fi



Accommodation

We have reserved the hotels:

Hamburger Börs

City Börs

Seurahuone

Accommodation is guaranteed for symposium delegates in these hotels if a reservation is made before 31 May 2008.

Hamburger Börs has high standard rooms and restaurants. It is the most popular hotel in Turku, absolutely in the city's pulsating centre by the Market Place.

The more economical, but comfortable Hotel City Börs is located on the opposite side of the street, with reception and breakfast room at Hamburger Börs.

Seurahuone is a centrally located comfortable hotel, situated close to the place of the Symposium Gala Dinner.

Reservations: download the reservation form (pdf) from the Symposium website www.utu.fi/4ESA2008, fill it in, print, sign and fax directly to Sokos Hotels.

Room prices in EUR for the symposium participants / room / night including breakfast:

Hamburger Börs

single: economy 101 € / standard 108 €

double: economy 111 € / standard 118 €

+ superior room supplement 20 €

City Börs

single: standard 69 €

Seurahuone

single: standard 69 €

double: standard 79 €

+ superior room supplement 15 €

Other accommodation possibilities in Turku

Turku Tourism office advices on accommodations: www.turkutouring.fi

Caribia is a spa hotel of the Holiday Club chain, with excellent pools, close to the Symposium venue: www.caribia.fi

Tapuli-talo has 5 guest rooms close to the University. Remember to mention ESA2008 when making your enquiry for a reservation. www.tapulitalo.fi

Bed and Breakfast Tuure offers budget accommodation in the city centre, close to the bus station. www.netti.fi/~tuure2/

Contact us about University guest rooms.

Additional Information

Languages and culture

The Symposium language is English.

Turku is a bilingual city with street names in Finnish and Swedish. The language skills and general education level among Finns is high. Finland is an affluent country of exceptional equality regarding gender, ethnicity and social status.

Weather and clothing

August weather in Turku is usually sunny and comfortably warm, with daytime temperatures between +10 and +20 °C and colder nights at +5 to +15°C. Rain and wind are not unusual, so pack a warm sweater and an umbrella.

The Finns like to dress comfortably and casually. The dress code at the Symposium dinner and social parties is casual, and require no formal evening wear. In the afternoon of Cruise day there are good opportunities for dancing onboard the liner. Bring comfortable walking shoes as we take the cathedral tour on foot.

Electrical appliances

The electric current in Finland is 230V, 50Hz. Plugs are two-pin continental size.

Telephone and internet

Country code for Finland is 358, the Turku area code 02. The symposium organisers telephone number is from abroad +358 2 333 6395, from Finland 02 333 6395.

Money, banking and shopping

Currency unit is the Euro. You can exchange foreign currency and traveller's cheques either in banks or at Forex currency exchange company (by the Market Place).

Opening times vary from 10-17 in boutiques to 8-21 in supermarkets. Banks are open Monday to Friday from 10:00 to 16:30. There are numerous cash machines (ATMs) operating 24h, accepting all major credit cards and Visa Electron cards. Major credit cards are accepted in hotels, restaurants, shops and taxis. You need to pay in cash at the local bus, at the Market place and in small shops. Turku city bus tickets can also be paid via mobile phone (instructions at bus stops).

Health and allergy info

Travel insurance is recommended. The toll-free general emergency number is 112 (same from all mobile phones).

Finnish shops and restaurants usually can provide for persons with food allergies and special diets. Smoking is prohibited in public buildings and vehicles, near schools, and in bars and restaurants.

About 15-20% of the Finnish adult population has been estimated to suffer from allergic rhinitis, and 2-6% from asthma. Awareness of allergy among Finns is high. The major allergy plant groups in Finland are birches (*Betula* spp) and grasses (Poaceae). In August the dominant airborne allergenic pollen is mugwort (*Artemisia*), but occasionally high levels of grass pollen are possible. There is practically no *Parietaria* or *Ambrosia* pollen. August is mould spore season in Southern Finland.



ESA 2008

European Symposium on Aerobiology

12-16 August 2008, Turku, Finland

Dates to remember:

Abstract submission 15 March 2008

Registration 31 May 2008

Contact information:

Internet pages

www.utu.fi/4ESA2008

Email address

esa2008-info@utu.fi

Postal address

4th ESA 2008
c/o Aerobiology Unit
FI-20014 University of Turku
Finland

Venue address

University of Turku campus
Educarium and Publicum
Assistentinkatu 5-7, Turku

Telephone

+358 2 333 6395

Fax

+358 2 333 5565

The Symposium is sponsored by:

